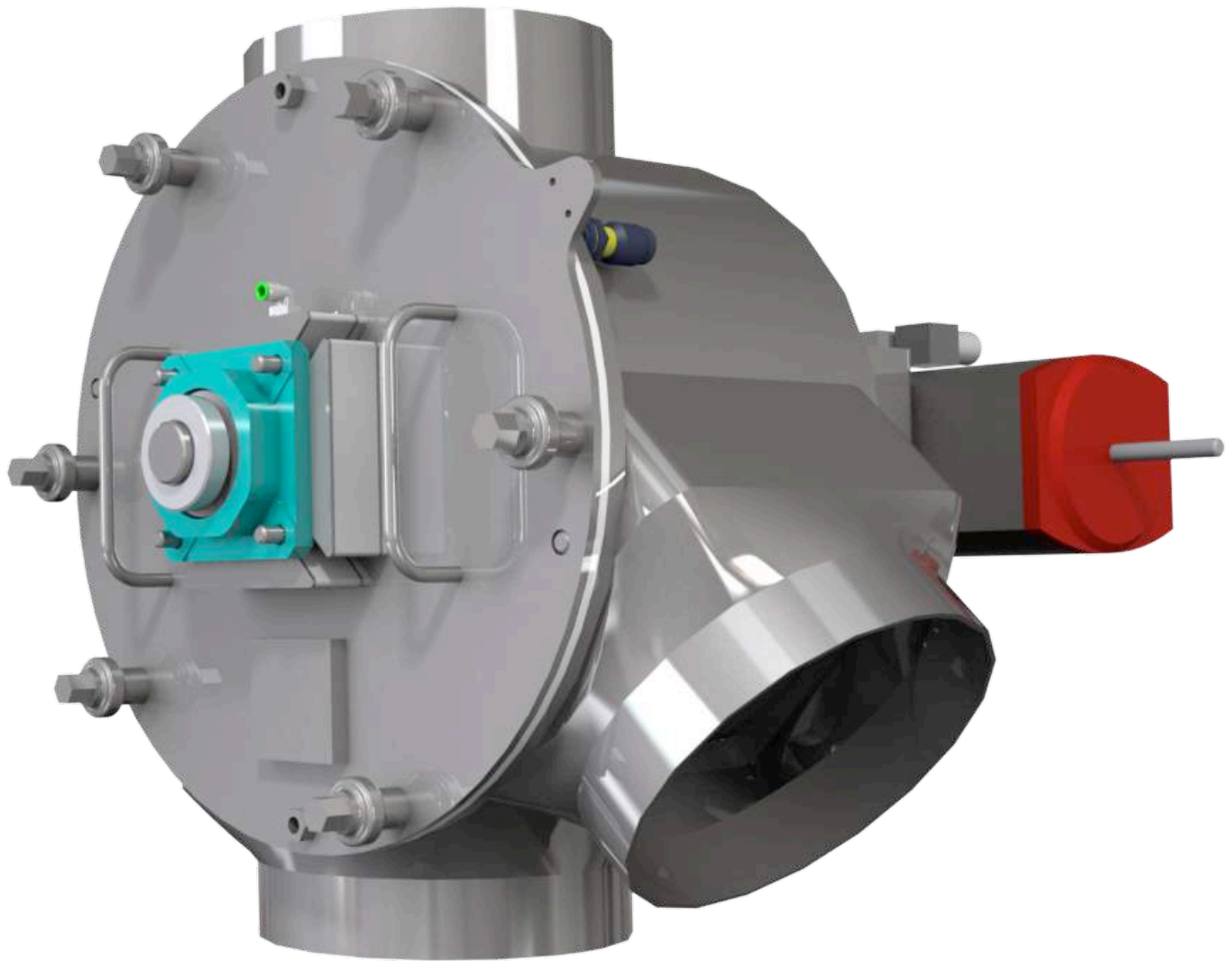


Gravity Divert Valve



- Tool Free take apart
- K (shown and Y configurations
- No composite materials in product zone

HAF

Process Equipment and Systems

Gravity Divert Valve

Tool-free and easy to disassemble divert valve features a non-composite all stainless steel divert blade. Close tolerance with closed ends on blade keeps powder flowing through the valve and not out of it.

Tool Free dis-assembly

End plate comes off to expose valve internals.

Tool free take apart

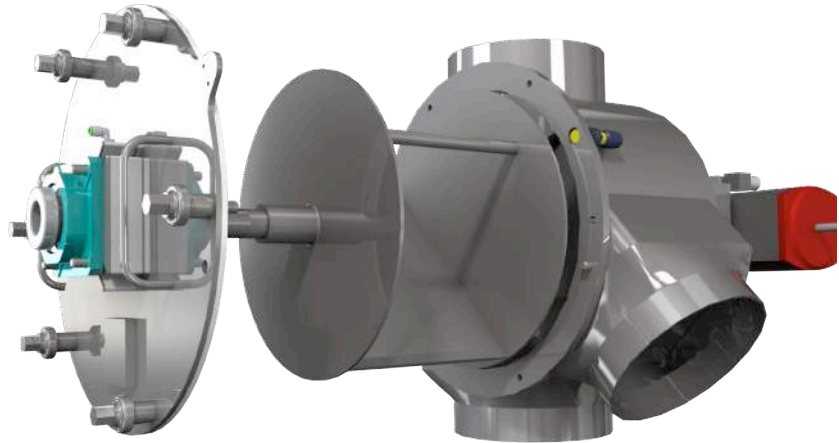
End cap removes easily

Internal blade is removed without tools

Available in Vee or Kay configurations

Compact pneumatic actuator

Size range suitable for 6" dia to 12" dia chute sizes



Sizes to match your chute sizes

Compact size with full size capabilities

Fabricated body

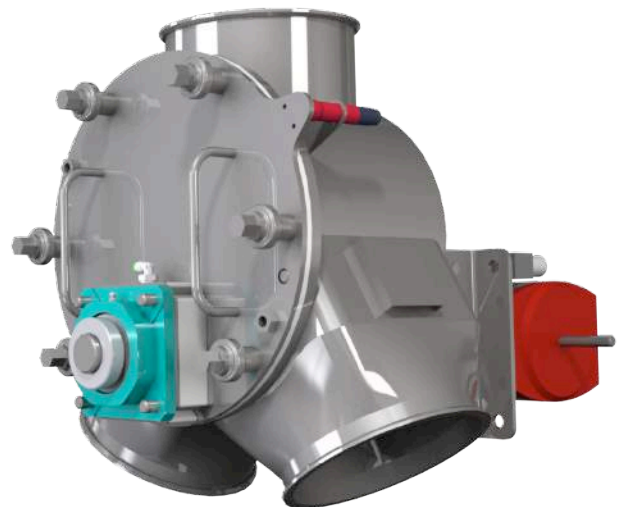
All access from one side

TIG Welded-robust 10 ga shell

Modular constructions suitable for different configurations

Outboard mounted bearings with air purge seals

End plates on divert blade-no rubber seals (that can fall off)



Food grade/ USDA-3A dairy/ Chemicals/ Plastics/ Nutraceuticals



www.hafequipment.com

HAF Equipment Inc
1255 Cope Ave East
Maplewood MN 55109
Phone: 651-653-5098